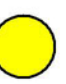






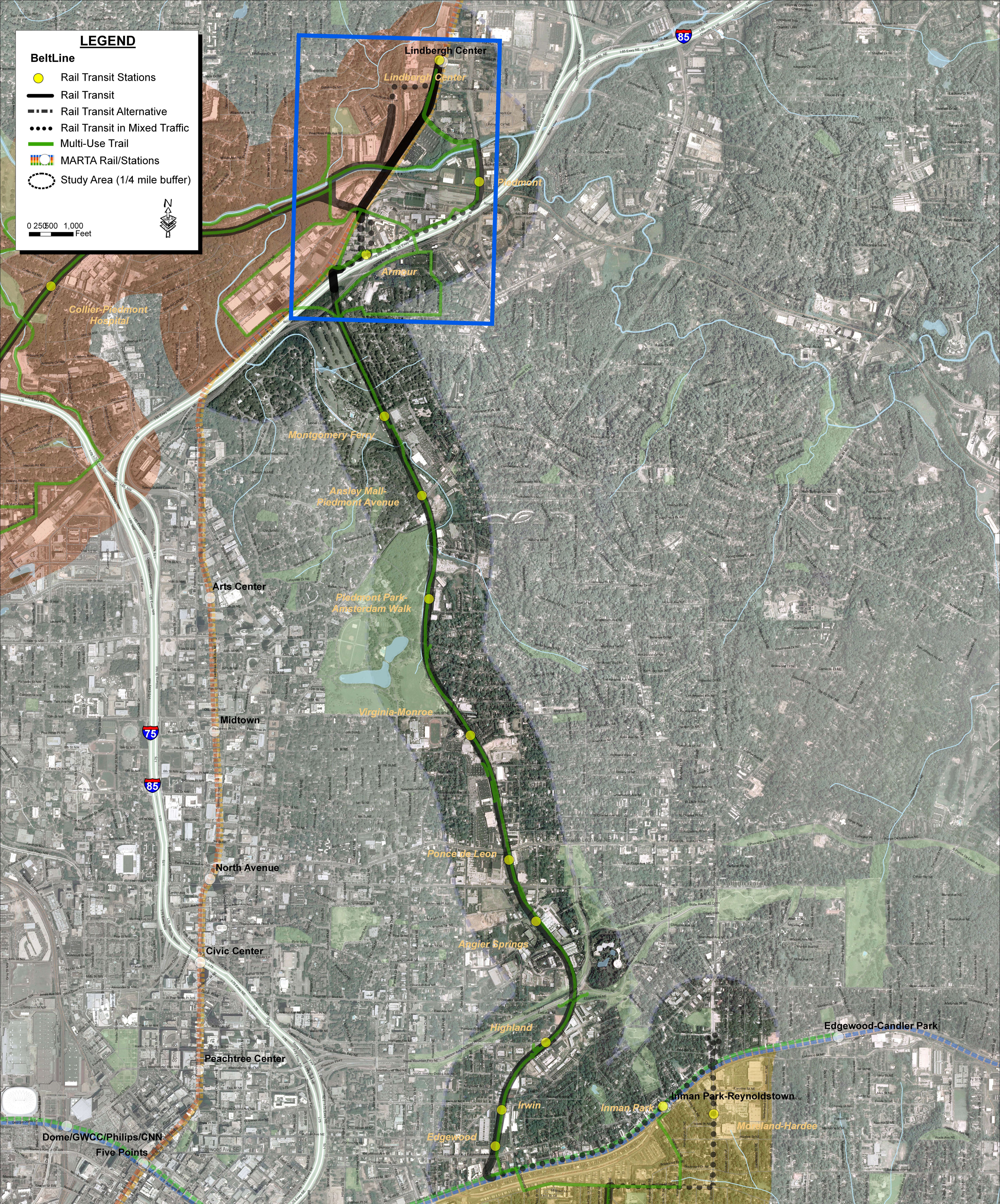


LEGEND

-  Rail Transit Stations
-  Rail Transit
-  Rail Transit Alternative
-  Rail Transit in Mixed Traffic
-  Multi-Use Trail
-  MARTA Rail/Stations
-  Study Area (1/4 mile buffer)

0 2500 1,000
Feet



BeltLine Proposed Alignment - Northeast Zone RAIL TRANSIT AND MULTI-USE TRAIL

